



제 2012 - 33554 호

안 전 인 증 서

(사업장명)

(주)대산이노텍

(소 재 지)

(314-821)충남 공주시 정안면 사현리 523

위 사업장에서 제조하는 아래의 품목이 산업안전보건법 제34조 및 같은 법 시행규칙 제58조의4제4항에 따른 안전인증 심사 결과 안전·보건기준에 적합하므로 안전인증표시의 사용을 인증합니다.

_____ 품 목 _____

호이스트

_____ 형식,모델(용량,등급)/인증번호 _____

DST-1.9W (1.9Ton) /12-AG2AC-03039

_____ 인 증 기 준 _____

고용노동부 고시 제2012 - 33호 (위험기계,기구 의무안전인증 고시)

_____ 인 증 조 건 _____

2012년 09월 25일



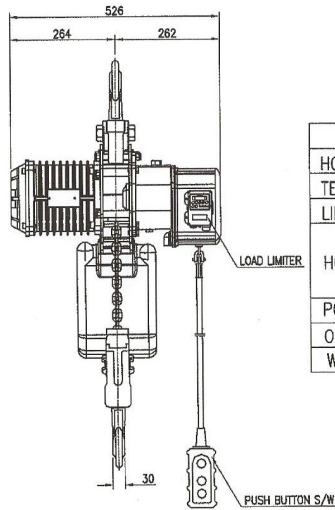
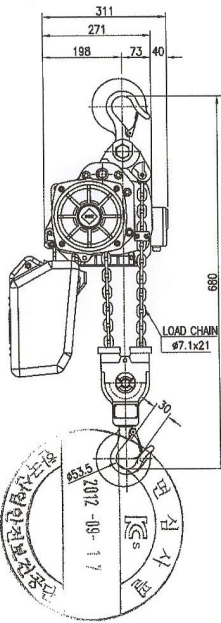
한국산업안전보건공단이사장

TECHNICAL SPECIFICATION

| | | | | |
|------------------------|-------------------|--|-----|--------------|
| DESCRIPTION | | 1.9 [TON] * HOOK SUSPENSION HOIST | | |
| TYPE | | DST - 1.9W TYPE | | |
| HOISTING LOAD | | 1.9 [TON] | | |
| TESTING LOAD | | 2.38 [TON] | | |
| LIFT | | 50 [M] | | |
| SPEED & MOTOR | HOISTING | SPEED | | |
| | | 60 [Hz] | 4.1 | 1.8[Kw] × 4P |
| | | 50 [Hz] | 3.4 | |
| BRAKE SYSTEM | HOISTING | MAGNET CONE BRAKE | | |
| ELECTRIC SPECIFICATION | POWER SOURCE | AC 3Ø 60/50[Hz] 220[V], 380[V], 440[V] | | |
| | CONTROL SOURCE | AC 1Ø 50/60[Hz] 110[V] | | |
| | LIMIT SWITCH | TWO STEP LIMIT SWITCH | | |
| | OVER LOAD LIMITER | ELECTRICAL TYPE. | | |
| | EM. STOP DEVICE | EMERGENCY STOP BUTTON | | |
| LOAD CHAIN | Ø7.1 × 21.0 | | | |
| MAX AMBIENT TEMPERATUE | | 40[°C] | | |
| RATING | | 30{min} | | |
| RATED DUTY | | 40%ED, ED = $\frac{\text{motor operation period(min) at maximum duty per hour}}{60\text{min}}$ | | |
| AREA CLASSIFICATION | | INDOOR | | |
| CONTROL METHOD | | BY PENDANT PUSH BUTTON S/W | | |
| PAINTING COLOR | | MUNSELL | | |



| NO | DESCRIPTION | MAT'L | Q'TY | WT(kg) | REMARKS |
|----|-------------|-------|------|--------|---------|
| | | | | | |



| SPECIFICATION | | | |
|------------------|---------------------------------|---------|---------------|
| HOISTING LOAD | 1.9 | TON | |
| TESTING LOAD | 2.375 | TON | |
| LIFTING HEIGHT | 50 | M | |
| HOISTING | SPEED | 50/60Hz | 3.4/4.1 M/MIN |
| | | 50/60Hz | 2.3/2.7 M/MIN |
| MOTOR | 1.8/1.2 KW x 4/6P x 1 SET | | |
| POWER SUPPLY | AC220, 380, 440 x 3φ x 50/60 Hz | | |
| OPERATING METHOD | P.B type ON . FL | | |
| WEIGHT | 170 KG | | |

| TITLE DST-1.9W CHAIN HOIST | | | | PROJECTION | |
|-------------------------------------|-----------|------------|------------|------------|------|
| WORK NO | WORK NAME | | | | |
| | | | | SCALE | Q'TY |
| | | | | 1/1 | 1 |
| DRAWN | CHECKED | REVIEWED | APPROVED | DRAWING NO | |
| YOO.M.P | - | LEE. H.J | Y.K | DST190W001 | |
| 2012.07.11 | - | 2012.07.11 | 2012.07.11 | | |
| DAESAN INoTEC IND. CO., LTD. | | | | | |

| REV.NO | DATE | REVISION DESCRIPTION | DRAWN | CHECKED | APPROVED |
|--------|------|----------------------|-------|---------|----------|
| | | | | | |

DST-1.9W .jpg

10

9

8

7

6

5

4

3

2

1

| NO | COMMODITY | CAPACITY | Q'TY | MODEL NO | MAKER |
|----|-----------|----------|------|----------|-------|
| | | | | | |

ELECTRIC ELEMENTARY DIAGRAM SYBOL LIST

| 항목 | 기 호 | 약 호 | 명 칭 | 항목 | 기 호 | 약 호 | 명 칭 |
|----|-----|------|-------------------------|----|-----|-----------|------------------------------------|
| 1 | — | | WIRE | 22 | | M302 | WEST MAGNET CONTACT 주접점 |
| 2 | | | WIRE CONNECTED | 23 | | M101 | UP MAGNET CONTACT 보조접점 a접점 |
| 3 | | | TERMINAL | 24 | | M102 | DOWN MAGNET CONTACT 보조접점 a접점 |
| 4 | | | 접지 | 25 | | M101 | UP MAGNET CONTACT 보조접점 b접점 |
| 5 | | | 전원입력 | 26 | | M102 | DOWN MAGNET CONTACT 보조접점 b접점 |
| 6 | | | NONE FUSE BREAKER | 27 | | M301 | EAST MAGNET CONTACT 보조접점 b접점 |
| 7 | | | FUSE | 28 | | M302 | WEST MAGNET CONTACT 보조접점 b접점 |
| 8 | | | 비상스위치 | 29 | | UPPER L/S | UP LIMIT SWITCH b접점 |
| 9 | | | PUSH BUTTON SWITCH a접점 | 30 | | LOWER L/S | DOWN LIMIT SWITCH b접점 |
| 10 | | | TRANSFORMER | 31 | | EAST L/S | 동향 LIMIT SWITCH b접점 |
| 11 | | | RECTIFIER | 32 | | WEST L/S | 서향 LIMIT SWITCH b접점 |
| 12 | | | CURRENT TRANSFORMER | 33 | | TP1 | 관성용 MOTOR 작동개전기 b접점 |
| 13 | | | 팬상용 MOTOR | 34 | | TP2 | 회향 MOTOR 작동개전기 b접점 |
| 14 | | | 회향 MOTOR | 35 | | SOL | SOLENOID TYPE DC MAGNET BRAKE COIL |
| 15 | | | UP MAGNET CONTACTOR | 36 | | M001 | MAIN MAGNETIC CONTACTOR |
| 16 | | | DOWN MAGNET CONTACTOR | 37 | | M001 | MAIN MAGNETIC CONTACTOR 주접점 |
| 17 | | | EAST MAGNET CONTACTOR | | | | |
| 18 | | | WEST MAGNET CONTACTOR | | | | |
| 19 | | M101 | UP MAGNET CONTACT 주접점 | | | | |
| 20 | | M102 | DOWN MAGNET CONTACT 주접점 | | | | |
| 21 | | M301 | EAST MAGNET CONTACT 주접점 | | | | |

물범복제 및 배포금지

| | | | | | |
|-------------------------|---------------------|------------|----------|------------|--|
| TITLE | | | | PROJECTION | |
| CIRCUIT DIAGRAM OF DSTM | | | | | |
| WORD NO | WORK NAME | | | SCALE Q'TY | |
| | DIAGRAM SYMBOL LIST | | | | |
| | DSTM-0.5S | | | | |
| DRAWN | CHECKED | REVIEWED | APPROVED | DRAWING NO | |
| E.D | | | Y.K | DSTM001 | |
| 2014.01.22 | | 2014.01.22 | | | |
| DAESAN INoTEC INC. | | | | | |

| REV. NO | DATE | REVISION DESCRIPTION | DRAWN | CHECKED | APPROVED |
|---------|------|----------------------|-------|---------|----------|
| 10 | | | | | |

10

9

8

7

6

5

4

3

2

1

10

9

8

7

6

5

4

3

2

1

| NO | COMMODITY | CAPACITY | Q'TY | MODEL NO | MAKER |
|----|-----------|----------|------|----------|-------|
| | | | | | |

ELECTRIC ELEMENTARY DIAGRAM SYBOL LIST

| 항목 | 기호 | 약호 | 명칭 | 항목 | 기호 | 약호 | 명칭 |
|----|-----|------|-------------------------|----|----|-----------|------------------------------------|
| 1 | — | | WIRE | 22 | | M302 | WEST MAGNET CONTACT 주접점 |
| 2 | —+— | | WIRE CONNECTED | 23 | | M101 | UP MAGNET CONTACT 보조접점 a접점 |
| 3 | ● | | TERMINAL | 24 | | M102 | DOWN MAGNET CONTACT 보조접점 a접점 |
| 4 | ⊕ | | 접지 | 25 | | M101 | UP MAGNET CONTACT 보조접점 b접점 |
| 5 | | | 전원입력 | 26 | | M102 | DOWN MAGNET CONTACT 보조접점 b접점 |
| 6 | | | NONE FUSE BREAKER | 27 | | M301 | EAST MAGNET CONTACT 보조접점 b접점 |
| 7 | | | FUSE | 28 | | M302 | WEST MAGNET CONTACT 보조접점 b접점 |
| 8 | | | 비상스위치 | 29 | | UPPER L/S | UP LIMIT SWITCH b접점 |
| 9 | | | PUSH BUTTON SWITCH a접점 | 30 | | LOWER L/S | DOWN LIMIT SWITCH b접점 |
| 10 | | | TRANSFORMER | 31 | | EAST L/S | 동향 LIMIT SWITCH b접점 |
| 11 | | | RECTIFIER | 32 | | WEST L/S | 서향 LIMIT SWITCH b접점 |
| 12 | | | CURRENT TRANSFORMER | 33 | | TP1 | 관성용 MOTOR 작동개전기 b접점 |
| 13 | | | 팬상용 MOTOR | 34 | | TP2 | 회향 MOTOR 작동개전기 b접점 |
| 14 | | | 회향 MOTOR | 35 | | SOL | SOLENOID TYPE DC MAGNET BRAKE COIL |
| 15 | | M101 | UP MAGNET CONTACTOR | 36 | | M001 | MAIN MAGNETIC CONTACTOR |
| 16 | | M102 | DOWN MAGNET CONTACTOR | 37 | | M001 | MAIN MAGNETIC CONTACTOR 주접점 |
| 17 | | M301 | EAST MAGNET CONTACTOR | | | | |
| 18 | | M302 | WEST MAGNET CONTACTOR | | | | |
| 19 | | M101 | UP MAGNET CONTACT 주접점 | | | | |
| 20 | | M102 | DOWN MAGNET CONTACT 주접점 | | | | |
| 21 | | M301 | EAST MAGNET CONTACT 주접점 | | | | |

물범복제 및 배포금지

| | | | | | |
|-------------------------|---------------------|------------|----------|------------|--|
| TITLE | | | | PROJECTION | |
| CIRCUIT DIAGRAM OF DSTM | | | | | |
| WORD NO | WORK NAME | | | SCALE Q'TY | |
| | DIAGRAM SYMBOL LIST | | | | |
| | DSTM-0.5S | | | | |
| DRAWN | CHECKED | REVIEWED | APPROVED | DRAWING NO | |
| E.D | | | Y.K | DSTM001 | |
| 2014.01.22 | | 2014.01.22 | | | |
| DAESAN INoTEC INC. | | | | | |

| REV. NO | DATE | REVISION DESCRIPTION | DRAWN | CHECKED | APPROVED |
|---------|------|----------------------|-------|---------|----------|
| 10 | | | | | |

10

9

8

7

6

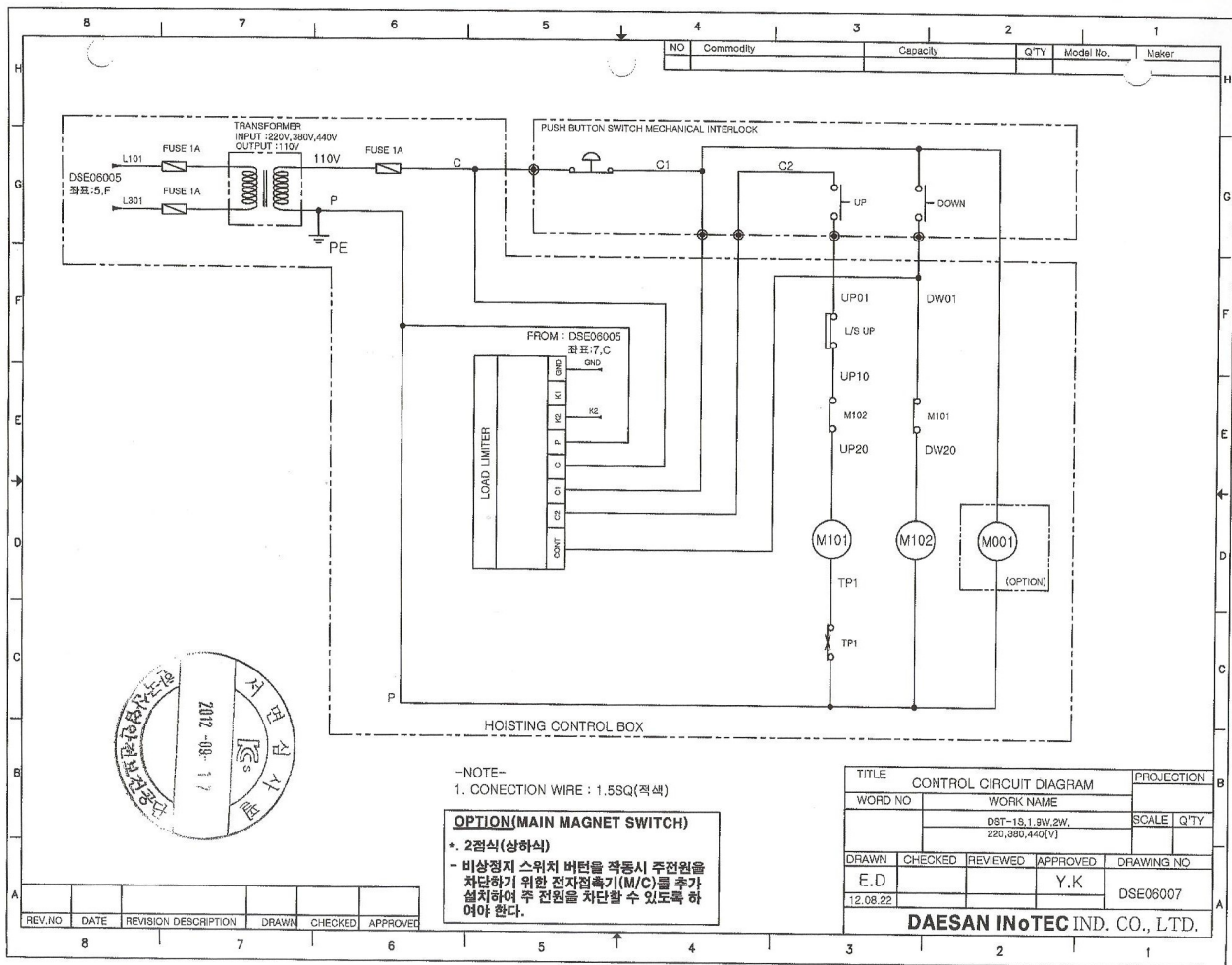
5

4

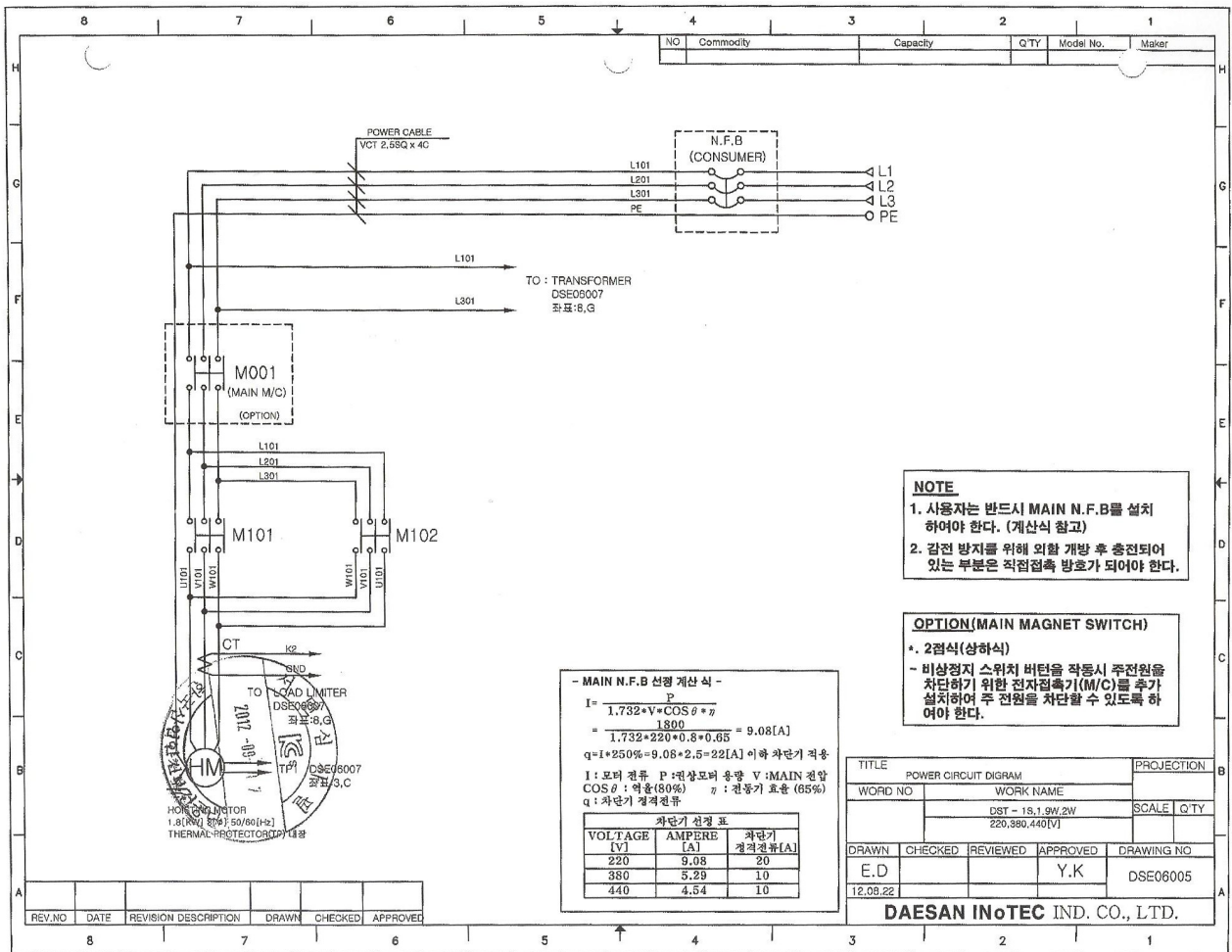
3

2

1



CONTROL CIRCUIT DIAGRAM.jpg



NOTE

1. 사용자는 반드시 MAIN N.F.B를 설치하여야 한다. (계산식 참고)
2. 감전 방지를 위해 외함 개방 후 충전되어 있는 부분은 직접접촉 방호가 되어야 한다.

OPTION(MAIN MAGNET SWITCH)

* 2점식(상하식)

- 비상정지 스위치 버튼을 작동시 추진원을 차단하기 위한 전자접속기(M/C)를 추가 설치하여 주 전원을 차단할 수 있도록 하여야 한다.

- MAIN N.F.B 선정 계산식 -

$$I = \frac{P}{1.732 \cdot V \cdot \cos \phi \cdot \eta}$$

$$= \frac{1.732 \cdot 220 \cdot 0.8 \cdot 0.65}{1800} = 9.08[A]$$

$q = I \cdot 250\% = 9.08 \cdot 2.5 = 22[A]$ 이하 차단기 격용

I : 모터 전류 P : 원상모터 용량 V : MAIN 전압
 COS φ : 역률(80%) η : 권동기 효율(65%)
 q : 차단기 정격전류

| 차단기 선정표 | | |
|-------------|------------|-------------|
| VOLTAGE [V] | AMPERE [A] | 차단기 정격전류[A] |
| 220 | 9.08 | 20 |
| 380 | 3.29 | 10 |
| 440 | 4.54 | 10 |

| | | | |
|-------------------------------------|------------------|------------|----------|
| TITLE POWER CIRCUIT DIGRAM | | PROJECTION | |
| WORD NO. | WORK NAME | SCALE | Q'TY |
| | DST - 19.1.9W.2W | | |
| | 220,380,440[V] | | |
| DRAWN | CHECKED | REVIEWED | APPROVED |
| E.D | | | Y.K |
| 12.08.22 | | | |
| DRAWING NO. | | DSE06005 | |
| DAESAN INoTEC IND. CO., LTD. | | | |

DST POWER CIRCUIT.jpg

pewag



pewag austria GmbH
 A-8605 Kapfenberg, Mariazeiler Straße 143
 Phone: +43 (0) 3862 / 2990-0
 Fax: +43 (0) 3862 / 29 90-700
 office@pewag.com
 www.pewag.com

Inspection certificate according to EN 10204 3.1
 Abnahmeprüfzeugnis nach EN 10204 3.1

| | | |
|--|---------------------------------------|-----------------|
| DAE SAN INOTEC INC. JUNGAN 2ND FARM'S IND. COMPL. 523 SAHYUN-RI, JUNGAN-MYUN ROK GONJU CITY, CHUNGCHONGNAM Specification according to Angewandte Norm JIS B8812 JIS B8812 | Order number Bestell-Nr. | MAIL 03/05 |
| | Certificate number Prüfzeugnis-Nr. | PWA201200332200 |
| | Commission number Werksbogen-Nr. | 127476900 |

| | | |
|------------------------|--------------------------|-------------------------------------|
| Additional information | Normbezeichnung | HE KN INOTEC B-MN G80 RAS 7,1X21 BF |
| Comment | Bemerkung | |
| Amount (pcs.) | Liefermenge (Stk.) | 12 |
| Length (m) | Länge (m) | 200 |
| Weight (kg) | Gewicht (kg) | 2672 |
| Material | Material | Special steel / Sonderstahl |
| Traceability code | Rückverfolgbarkeits-Code | D.505080 |

| | | Nominal data Sollwerte | |
|----------------------------|----------------------------|---------------------------|-----------------|
| Working load limit | Tragfähigkeit | M5/M3 | kg |
| Proof load min. | Fertigungsprüfkraft | | 1000/1300 |
| Breaking load min. | Bruchkraft | | 40,00 |
| Elongation at rupture min. | Bruchdehnung | | 93,00 |
| Nominal diameter | Nennstärke | d | % |
| Max diameter at the weld | Geschweißter Scheitel max. | d _S | 7.1 +0.10/-0.30 |
| Pitch | Teilung | t | 7.80 |
| Length of measurement | Messlänge | l ₁ | 21 +0.20/-0.20 |
| Outside width | Breite außen | b ₂ | 201 +0.65/-0.35 |
| Inside width | Breite innen | b ₁ | 22.1 MAX |
| Deflection min. | Biegeprüfung min. | | 5.9 (MIN) |
| Twist | Drehprüfung | | mm |
| Surface hardness | Oberflächenhärte | | 580-700 HV10 J |
| Hardness at the core | Kernhärte | HV | CA 380 HV10 |
| Case depth | Einschichttiefe | mm | 0.21 - 0.30 |

Surface
Oberfläche
Stamp
Stempeltext
BLACK FINISH
BLACK FINISH
"D.S."

EG/CE - Declaration by the manufacturer.

We declare in our sole responsibility that the product mentioned in this certificate fulfils the relevant provisions of the Machinery Directive 2006/42/EC and that the CE-Mark is validly used, provided it is a precondition to put the product into service that the instruction for use (www.pewag.com/infocenter_downloads.asp) has been read and understood.

EG/CE - Erbauerklärung:

Wir erklären in alleiniger Verantwortung, dass das in diesem Prüfzeugnis genannte Produkt die Bestimmungen der Richtlinie 2006/42/EG erfüllt und die angeführten Normen angewendet wurden. Voraussetzung für die Inbetriebnahme ist, dass die Bedienungsanleitung gelesen (www.pewag.com/infocenter_downloads.asp) und verstanden wurde.

| | | | |
|--|------------|--|---|
| Result of test Prüfergebnis | Kapfenberg | Manufacturer Qualitätsseite | This certificate was generated by computer and is valid without a signature. Dieses Prüfzeugnis wurde EDV-unterstützt erstellt und ist ohne Unterschrift gültig. |
| WITHOUT ANY OBJECTION OHNE BEANSTÄNDIGUNG | 26.07.2012 | I A DI Scharfetter (Acceptance representative) (Abnahmebeauftragter) | |

This test certificate must be kept for ten years resp. during the entire service life.
 Dieses Prüfzeugnis ist 10 Jahre lang bzw. über die gesamte Nutzungsdauer aufzubewahren.

Rechtshilfe: Gesetzlich mit beschränkter Haftung, 8100 Graz
 Firmenbuchnummer FN 35 203
 Firmenbuchgericht: Landesgericht für Zivilsachen
 UID-Nr.: ATU2693801, ARA-Lizenznummer: 1209



DAESAN INOTEC INC.

EC Declaration of Conformity

We hereby declare that the following product is in conformity with the essential health and safety requirements of the following EC Directive:

Product : AC Motor
Model : DSAI-1S
Manufacture : DAESAN INOTEC INC.
523, Sahyun-Ri, Jungahn-Myun, Gongju-Si,
Chungcheongnam-do, South Korea
Rated input voltage : AC 220V / 380V / 440V
Rated frequency : 50/60 Hz
Rated input current : 9.2A/4.91A/4.24A

Applicable EU Directive : Low Voltage Directive (73/23/EEC)

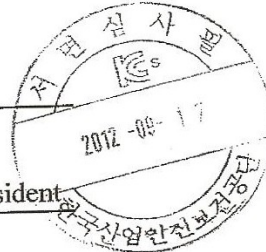
This product is designed and manufactured in accordance with the following standards

Applicable standards : IEC 60034/1: 2004
IEC 60034-11:2004

Year of CE Marking : 2005-12-27

Authorized signature :

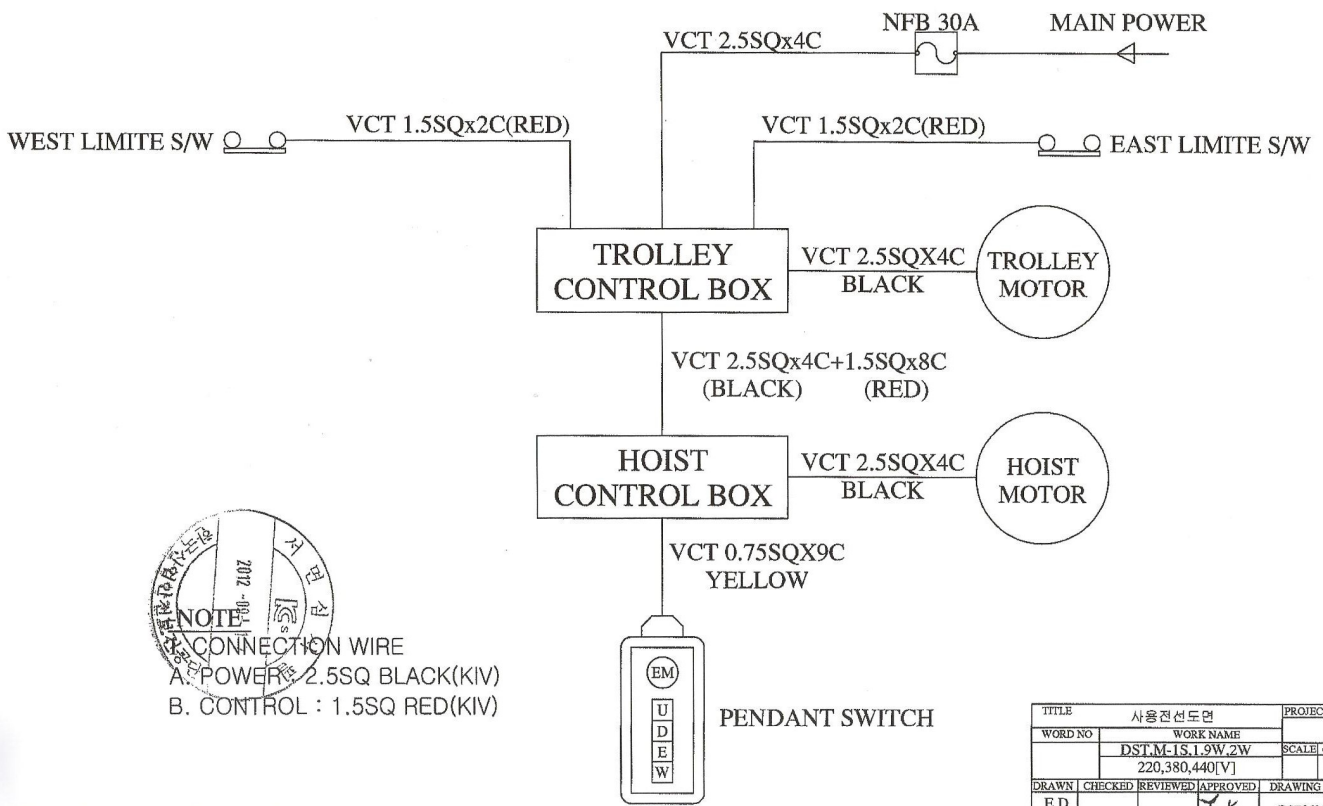
Name / Title of signature: Sung Won Kang / President



| NO | Commodity | Capacity | QTY | Model No. | Maker |
|----|-----------|----------|-----|-----------|-------|
|----|-----------|----------|-----|-----------|-------|

사용전선도면

MODEL : DST,M-1S,1.9W,2W



NOTE
 CONNECTION WIRE
 A. POWER : 2.5SQ BLACK(KIV)
 B. CONTROL : 1.5SQ RED(KIV)

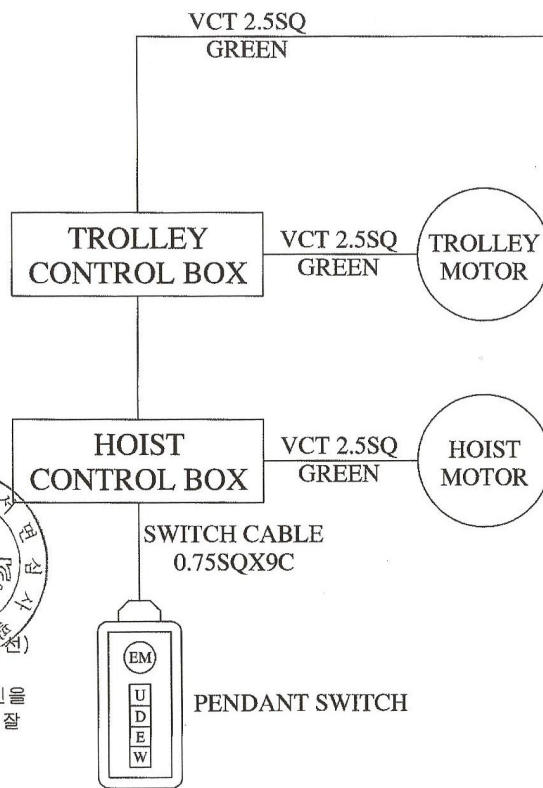
| REV.NO | DATE | REVISION DESCRIPTION | DRAWN | CHECKED | APPROVED |
|--------|------|----------------------|-------|---------|----------|
| | | | | | |

| | | | | | |
|------------------------------|------------------|----------|----------|------------|-----|
| TITLE | | 사용전선도면 | | PROJECTION | |
| WORD NO | WORK NAME | | | SCALE | QTY |
| | DST,M-1S,1.9W,2W | | | | |
| | 220,380,440[V] | | | | |
| DRAWN | CHECKED | REVIEWED | APPROVED | DRAWING NO | |
| E.D | | | | DSE06011 | |
| 12.08.22 | | | | | |
| DAESAN INoTEC IND. CO., LTD. | | | | | |

접지도면

MODEL : DST,M-1S,1.9W,2W

| NO | Capacity | QTY | Model No. | Maker |
|----|----------|-----|-----------|-------|
|----|----------|-----|-----------|-------|



접지공사 시설방법

1. 전동기의 후레임, 제어반, 레일등은 접지를 해야 하며다음의 규정을 따른다.

| | | |
|-----------|---------|---------|
| 3중 접지 | 400V 이하 | 100Ω 이하 |
| 특별 제3중 접지 | 400V 초과 | 10Ω 이하 |

단 방폭지역은 전압에 관계없이 10Ω 이하일것.

2. 접지전용 트롤리선 및 전선은 당해 전기기기, 기구에 대하여 충분한 용량 및 전기적, 기계적 강도를 가져야 한다.
3. 접지선이 외상을 받을 우려가 있는 경우에는 전선관, 합성수지관 등에 넣어야 한다.
4. 접지공사는 지표면에서 최저 75Cm 이상의 깊이에 접지봉을 박고 접지봉에는 접지동판을 연결한다.

-NOTE-

1. TROLLEY-BAR은 전기 기술기준 제226호 (저압접촉전선)에 준하여 설치한다.
2. MAIN S/W BOX는 당해 크레인을 지상에서 쉽게 개폐할 수 있는 잘 보이는 곳에 설치한다.



| | | | | |
|------------------------------|------------------|----------|----------|------------|
| TITLE | | 접지도면 | | PROJECTION |
| WORD NO | WORK NAME | | | SCALE QTY |
| | DST,M-1S,1.9W,2W | | | |
| | 220,380,440[V] | | | |
| DRAWN | CHECKED | REVIEWED | APPROVED | DRAWING NO |
| E.D | | | Y.K | DSE06010 |
| 12.08.22 | | | | |
| DAESAN INoTEC IND. CO., LTD. | | | | |

| REV. NO | DATE | REVISION DESCRIPTION | DRAWN | CHECKED | APPROVED |
|---------|------|----------------------|-------|---------|----------|
|---------|------|----------------------|-------|---------|----------|

SCHEDULE OF TECHNICAL DATA

| | |
|---|--------------------------|
| 1. SERVICE | HOISTING |
| 2. MANUFACTURE | DAESAN INOTEC INC. |
| 3. MOTOR MODEL NO. | DSAI - 1S - 220 |
| 4. RATED POWER | 1.8 KW x 4 P |
| 5. RATED VOLTAGE AND FREQUENCY | 220 V 60 HZ |
| 6. MOTOR TYPE | SQUIRREL CAGE ROTOR YPE |
| 7. RATING | 30 MIN |
| 8. LOCATION | IN-DOOR , OUT-DOOR |
| 9. INSULATION CLASS | B |
| 10. DESING TEMPERATURE RISE (BY RESISTANCE) | 80°C |
| 11. FULL LOAD SPEED | 1740 RPM |
| 12. FULL LOAD CURRENT | 9.4 A |
| 13. STARTING CURRENT AT RATED VOLTAGE | 47.0 A |
| 14. MINIMUM STATING VOLTAGE | 198 V |
| 15. EFFICIENCY AT 100% RAGED LOAD | 72.0% |
| 16. POWER FACTOR AT 100% RATED LOAD | 70.0% |
| 17. STARTING TORQUE | 238% |
| 18. TYPE OF ENCLOSURE | 전폐형 |
| 19. TYPE OF BEARING | PL : 6008DD OPL : 6207ZZ |
| 20. MOUNTING | VERTICAL |
| 21. MAXIMUM AMBIENT TEMPURE | 40°C |
| 22. BEARING LUBRICATION | GREASE |
| 23. STARTING METHOD | FULL VOLTAGE |

SCHEDULE OF TECHNICAL DATA

| | |
|---|--------------------------|
| 1. SERVICE | HOISTING |
| 2. MANUFACTURE | DAESAN INOTEC INC. |
| 3. MOTOR MODEL NO. | DSAI - 1S - 380 |
| 4. RATED POWER | 1.8 KW x 4 P |
| 5. RATED VOLTAGE AND FREQUENCY | 380 V 60 HZ |
| 6. MOTOR TYPE | SQUIRREL CAGE ROTOR YPE |
| 7. RATING | 30 MIN |
| 8. LOCATION | IN-DOOR , OUT-DOOR |
| 9. INSULATION CLASS | B |
| 10. DESING TEMPERATURE RISE (BY RESISTANCE) | 80°C |
| 11. FULL LOAD SPEED | 1740 RPM |
| 12. FULL LOAD CURRENT | 5.5 A |
| 13. STARTING CURRENT AT RATED VOLTAGE | 26.8 A |
| 14. MINIMUM STATING VOLTAGE | 342 V |
| 15. EFFICIENCY AT 100% RAGED LOAD | 72.5% |
| 16. POWER FACTOR AT 100% RATED LOAD | 68.8% |
| 17. STARTING TORQUE | 243% |
| 18. TYPE OF ENCLOSURE | 전폐형 |
| 19. TYPE OF BEARING | PL : 6008DD OPL : 6207ZZ |
| 20. MOUNTING | VERTICAL |
| 21. MAXIMUM AMBIENT TEMPURE | 40°C |
| 22. BEARING LUBRICATION | GREASE |
| 23. STARTING METHOD | FULL VOLTAGE |

SCHEDULE OF TECHNICAL DATA

| | |
|---|--------------------------|
| 1. SERVICE | HOISTING |
| 2. MANUFACTURE | DAESAN INOTEC INC. |
| 3. MOTOR MODEL NO. | DSAI - 1S - 440 |
| 4. RATED POWER | 1.8 KW x 4 P |
| 5. RATED VOLTAGE AND FREQUENCY | 440 V 60 HZ |
| 6. MOTOR TYPE | SQUIRREL CAGE ROTOR YPE |
| 7. RATING | 30 MIN |
| 8. LOCATION | IN-DOOR , OUT-DOOR |
| 9. INSULATION CLASS | B |
| 10. DESING TEMPERATURE RISE (BY RESISTANCE) | 80°C |
| 11. FULL LOAD SPEED | 1740 RPM |
| 12. FULL LOAD CURRENT | 4.7 A |
| 13. STARTING CURRENT AT RATED VOLTAGE | 22.8 A |
| 14. MINIMUM STATING VOLTAGE | 396 V |
| 15. EFFICIENCY AT 100% RAGED LOAD | 71.9% |
| 16. POWER FACTOR AT 100% RATED LOAD | 69.8% |
| 17. STARTING TORQUE | 245% |
| 18. TYPE OF ENCLOSURE | 전폐형 |
| 19. TYPE OF BEARING | PL : 6008DD OPL : 6207ZZ |
| 20. MOUNTING | VERTICAL |
| 21. MAXIMUM AMBIENT TEMPURE | 40°C |
| 22. BEARING LUBRICATION | GREASE |
| 23. STARTING METHOD | FULL VOLTAGE |

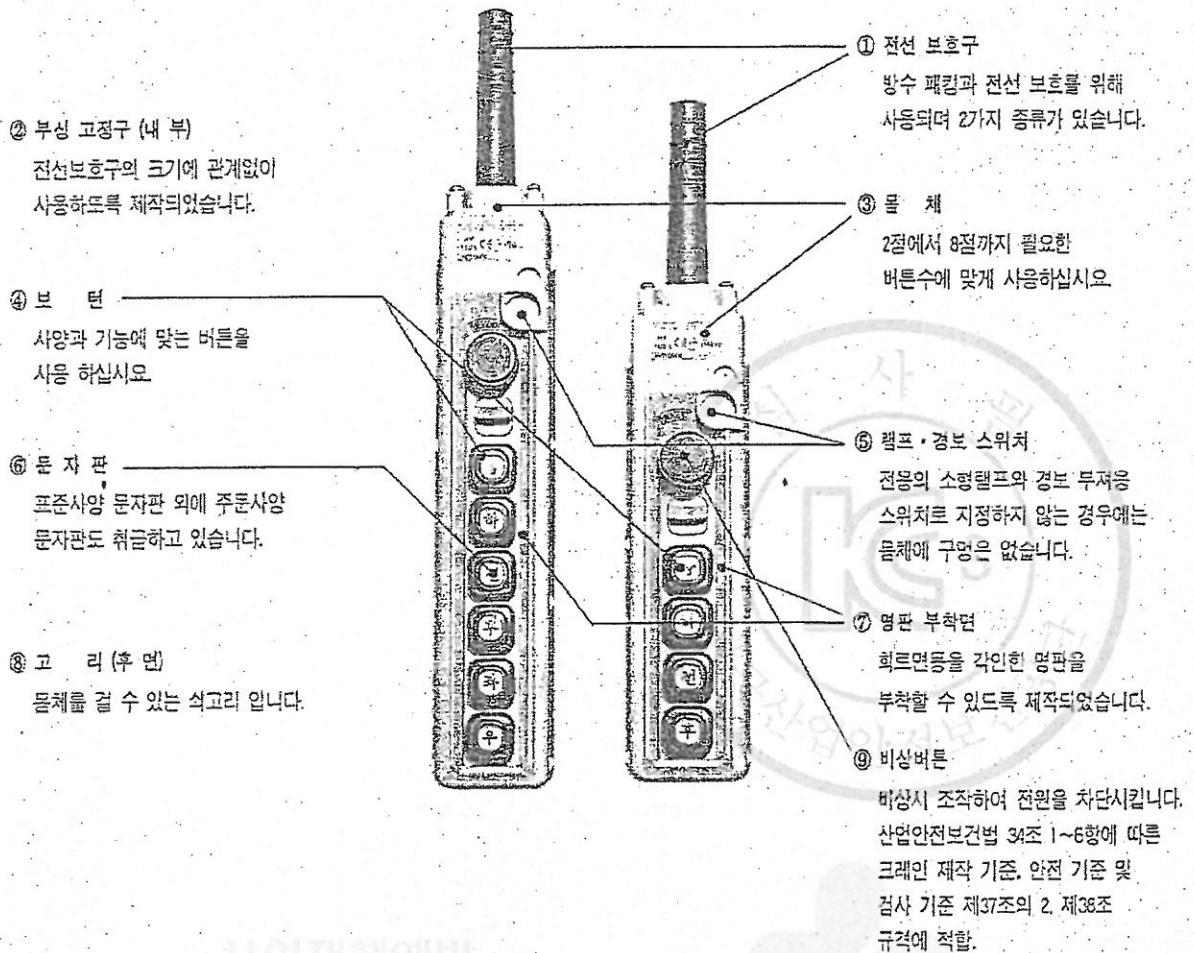
호이스트 스위치

전자 조작용 개폐 스위치 (HOIST SWITCH)

- 전동 HOIST조작용으로 현수식 늘름버튼형 개폐기입니다.
- 방수형의 구조이며 외곽케이스는 기계적 강도 및 전기적 특성이 우수한 주석을 사용하여 가볍고 견고하게 설계되었습니다.
- 스위치 자체에 전원 단절용으로 주회로를 개폐할 수 있는 구조로 되어 있습니다.
- 접점 부분은 1단(1a)이 기본이며, 전동기 속도 제어에 필요한 2단 접점이 있어 필요 부분에 부착 사용할 수 있도록 설계되어 있습니다.
- 풍부한 버튼 문자판이 준비되어 있어 응도에 맞추어 선택 사용이 용이합니다.
- 소형 및 경량으로 설계되어 경제적입니다.
- 걸고리가 장착되어 사용이 편리합니다.



구 조

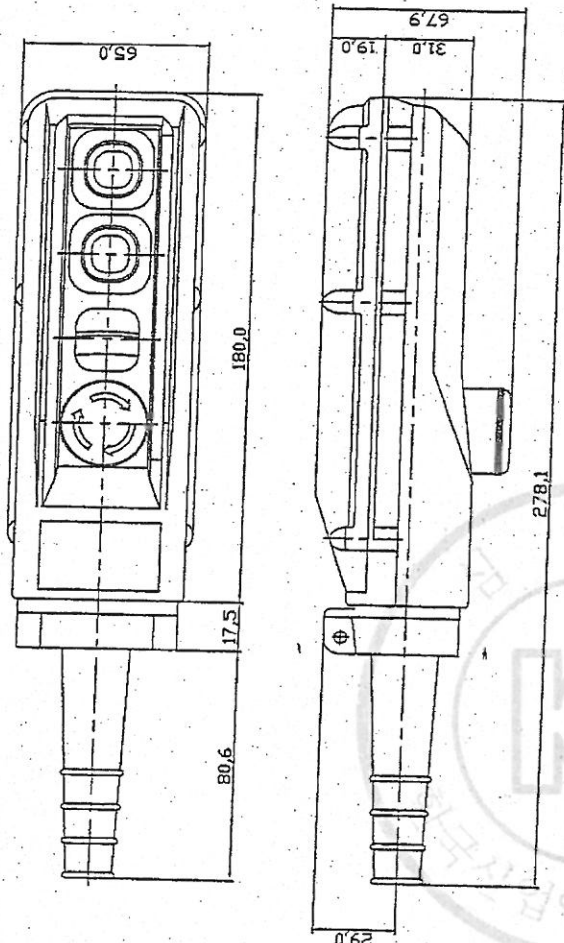


산업안전예방
이전보건공단

INDUSTRIAL OCCUPATIONAL SAFETY & HEALTH

불법복제 및 배포금지

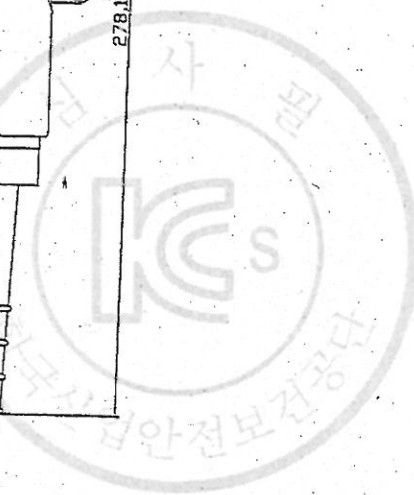
| | | | | |
|-----|----------|--------------|-----------|-------|
| NO. | CAPACITY | CAPACITY QTY | MODEL NO. | MAKER |
| | | | | |



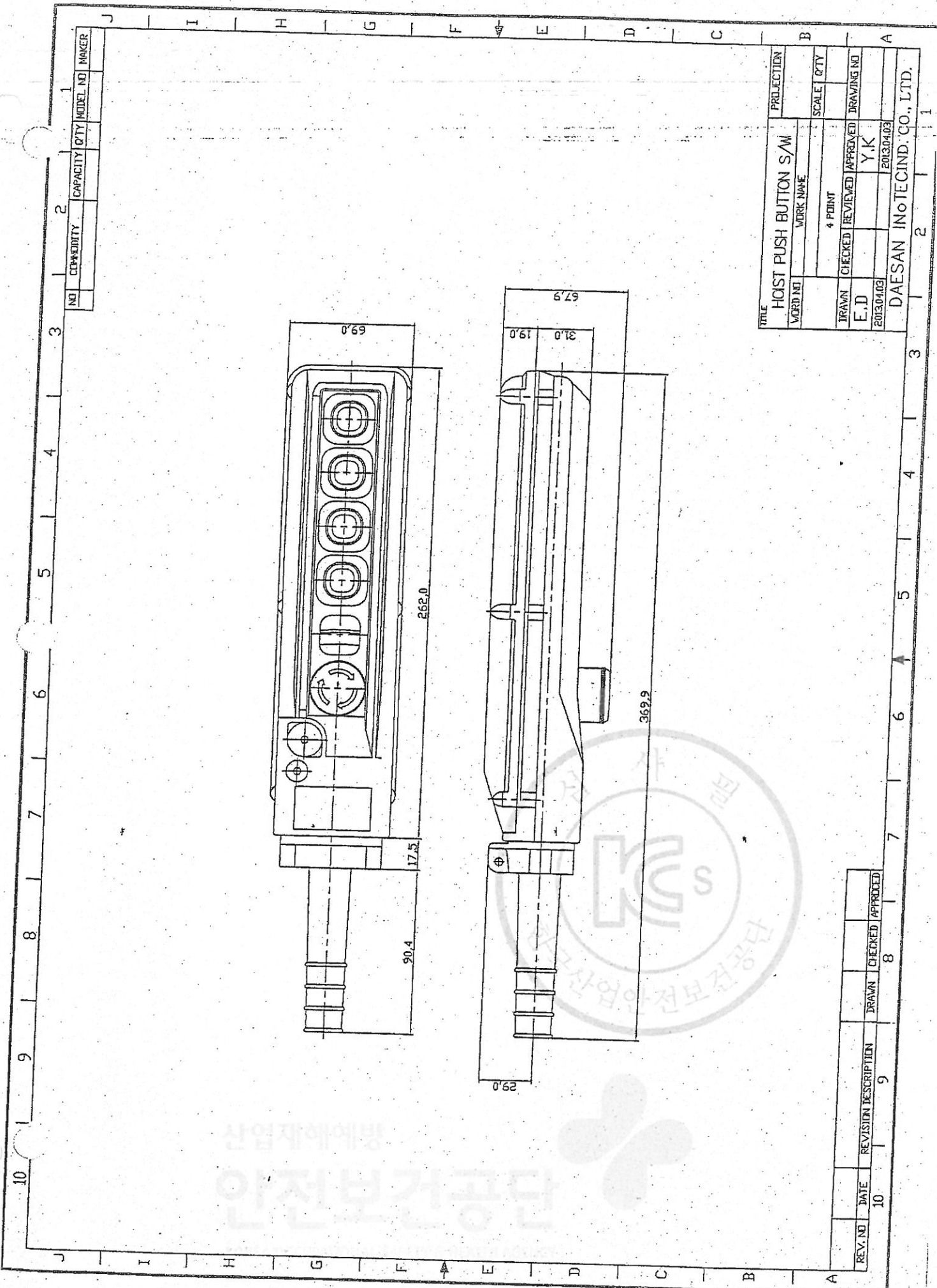
| | | | |
|--------------------------------|-----------|------------|----------|
| * NOTE * | | PROJECTION | |
| TITLE HOIST PUSH BUTTON S/W | | | |
| WORD NO. | WORK NAME | SCALE | QTY |
| | 2 POINT | | |
| DRAWN | CHECKED | REVIEWED | APPROVED |
| E.D | | Y.K | |
| 20130403 | | 20130403 | |
| DAESAN INOTECHIND. CO., LTD. | | | |

| REV. NO. | DATE. | REVISION DESCRIPTION | DRAWN | CHECKED | APPROVED |
|----------|-------|----------------------|-------|---------|----------|
| | | | | | |

산업재해예방
안전보건공단



불법복제 및 배포금지

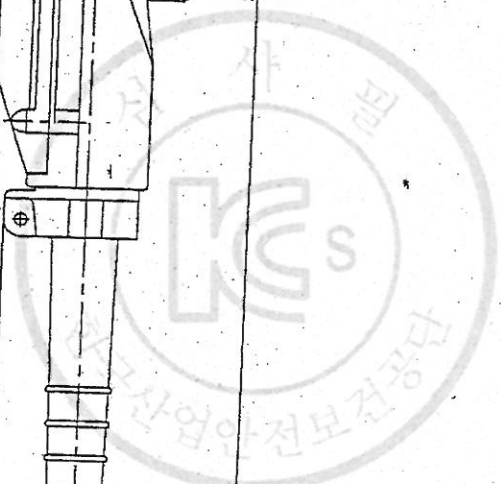


| | | | | | |
|----|----------|----------|------|----------|---------|
| NO | CAPACITY | CAPACITY | CITY | MODEL NO | MANAGER |
| | | | | | |

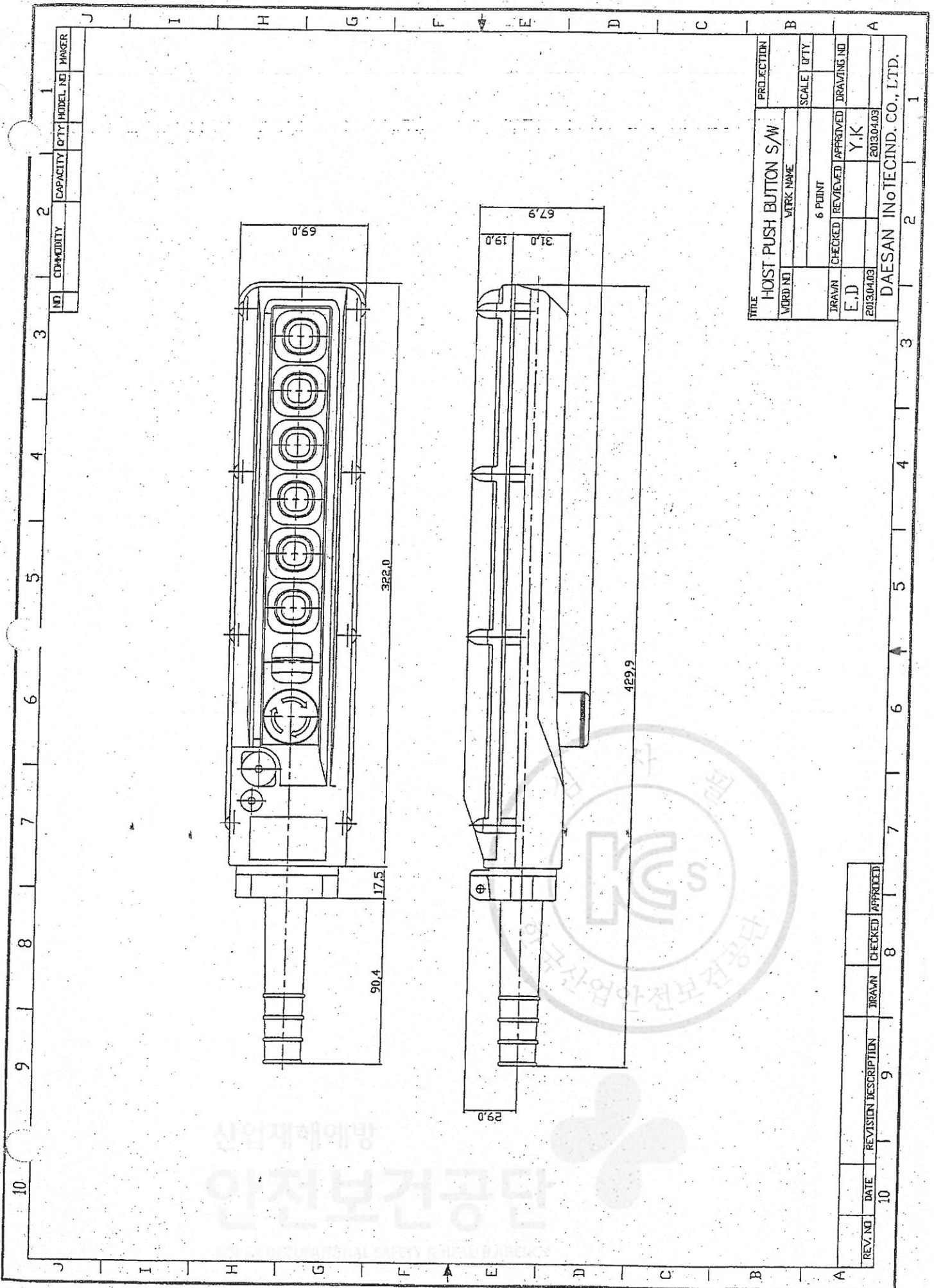
| | | | | | |
|------------------------------|--|-----------------------|--|------------|--|
| TITLE | | HOIST PUSH BUTTON S/W | | PROJECTION | |
| WORD NO | | WORK NAME | | SCALE | |
| DRAWN | | CHECKED | | REVISED | |
| E.D | | Y.K | | DRAWING NO | |
| 2013.04.03 | | 2013.04.03 | | | |
| DAESAN INOTECHIND. CO., LTD. | | | | | |

| | | | | | |
|---------|------|----------------------|-------|---------|----------|
| REV. NO | DATE | REVISION DESCRIPTION | DRAWN | CHECKED | APPROVED |
| | | | | | |

산업자에에빙
안전보건공단



불법복제 및 배포금지



| | | | | | |
|-----|-----------|----------|-----|-----------|-------|
| NO. | COMMODITY | CAPACITY | QTY | MODEL NO. | MARCR |
| | | | | | |

| | | | | | |
|------------------------------|--|----------------------|--|-------------|--|
| TITLE | | HOST PUSH BUTTON S/W | | PROJECTION | |
| WORD NO. | | WORK NAME | | SCALE | |
| DRAWN | | CHECKED | | QTY | |
| E.D. | | REVIEWED | | 6 POINT | |
| 2013.04.03 | | APPROVED | | DRAWING NO. | |
| | | Y.K | | | |
| | | 2013.04.03 | | | |
| DAESAN INOTECHIND. CO., LTD. | | | | | |

| | | | | | |
|----------|------|----------------------|-------|---------|----------|
| REV. NO. | DATE | REVISION DESCRIPTION | DRAWN | CHECKED | APPROVED |
| | | | | | |

상업적해예방
안전보건공단

제 2012-BJ-0008 호



안 전 인 증 서

정호엔지니어링

경기도 광명시 노동사동 440-5

위 사업장에서 제조하는 아래의 품목이 산업안전보건법 제34조 및 같은 법 시행규칙 제58조의4제4항에 따른 안전인증 심사 결과 안전·보건기준에 적합하므로 안전인증표시의 사용을 인증합니다.

품 목

양증기용 과부하방지장치

형식·모델/용량·등급·등급/인증번호

| 형식·모델 | 용량·등급 | 인증번호 |
|---------|-------|---------------|
| JDLS-70 | J-2 | 12-AV2BJ-0008 |

인 증 기 준

방호장치 의무안전인증 고시(고용노동부고시 제2010-36호)

인 증 조 건

아래 주소에서 생산되는 제품에 한함.
정호엔지니어링, 경기도 광명시 노동사동 440-5

2012년 06월 11일

한국산업안전보건공단 이사장

