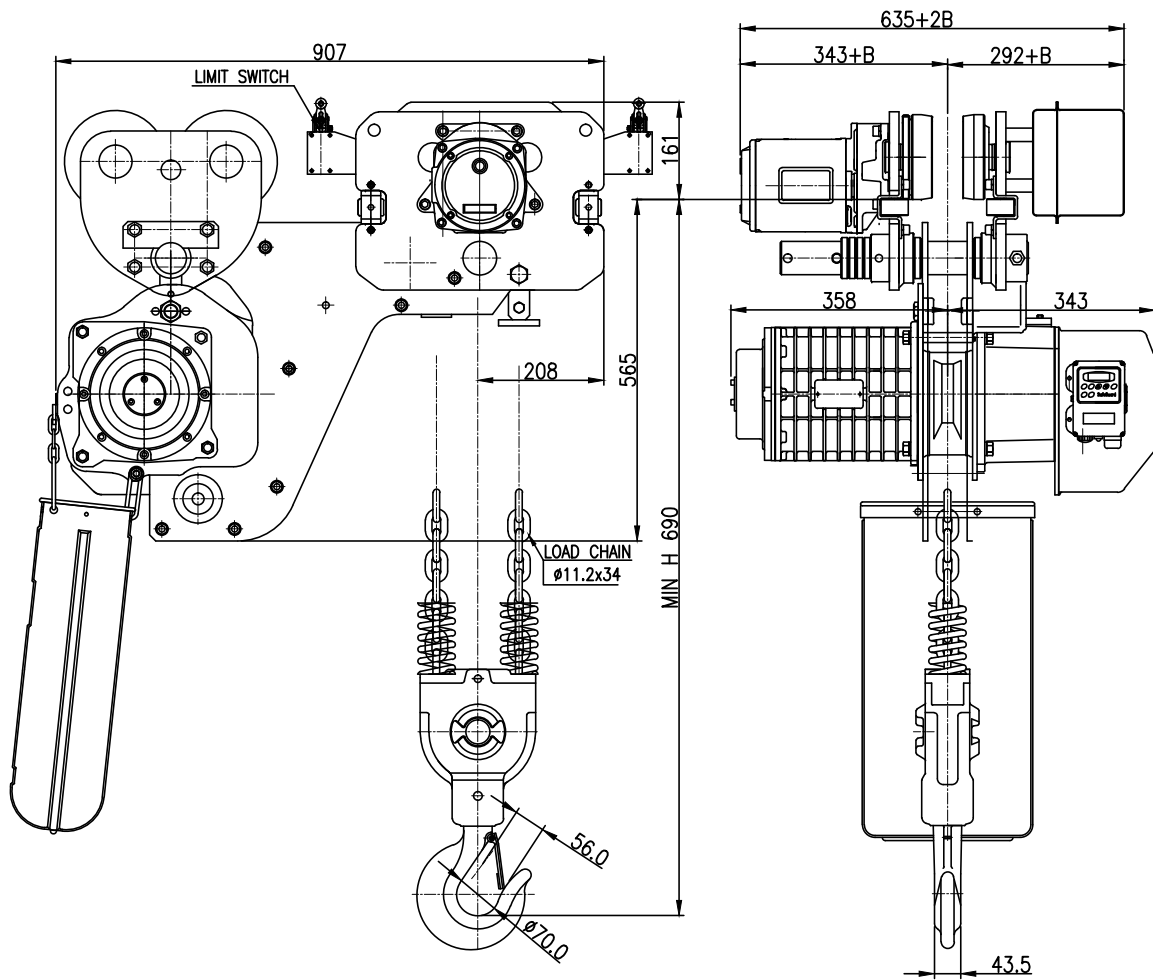


NO	DESCRIPTION	MAT'L	Q'TY	WT(kg)	REMARKS



SPECIFICATION	
HOISTING LOAD	5 TON
TESTING LOAD	6.25 TON
LIFTING HEIGHT	5 M
HOISTING	SPEED 1.35~3.25 M/MIN
	MOTOR 3.5 KW x 1 SET
TRAVERSING	SPEED 5.2~15.2 M/MIN
	MOTOR 0.75 KW x 1 SET
POWER SUPPLY	AC 220,380,440V x 3ø x 60 Hz
OPERATING METHOD	P.B type ON . FL
WEIGHT	334 KG
I-BEAM SIZE	125-175 MM

NOTE

- \* B는 BEAM 변동치수 치수임.
- \* ROLLER DIA : Ø140
- \* LIMIT SWITCH : OPTION
- \* 본 도면은 I-BEAM 125MM 기준임

TITLE EDSHM-5W CHAIN HOIST				PROJECTION	
WORK NO		WORK NAME			
				SCALE	Q'TY
				1/1	1
DRAWN	CHECKED	REVIEWED	APPROVED	DRAWING NO	
H.J	-	LEE	Y.K	EDSHM05020	
2020.09.15	-	2020.09.15	2020.09.15		

순번	1/5	2/6	3/7	4/8	
공정					
도면에 지시되지 않은 일반공차					
가공별 치수	3-6	6-30	30-120	120-315	315-1000
선삭					
구멍간 거리	±0.1	±0.2	±0.3	±0.5	±0.8

REV.NO	DATE	REVISION DESCRIPTION	DRAWN	CHECKED	APPROVED

**DAESAN INoTEC INC**